



■ January 2006

Confidential Shipment Statistics



PLAN YOUR NEXT MOVE WITH NFPA'S MONTHLY CSS REPORT.

U.S. FLUID POWER ORDERS REPORT

Product Type	% Change from last year*	% Change from last month*	Jan 2006 Preliminary Index**	Dec 2005 Final Index	Jan 2005 Index	Dec Year-to-Date % Change
Total Fluid Power	19.3	19.9	127.5	106.3	106.9	14.0
Pneumatic	8.3	8.8	113.9	104.6	105.1	6.0
Total Hydraulic	20.7	24.9	131.8	105.5	109.1	15.1
Mobile Hydraulic	22.7	24.7	136.1	109.1	110.9	18.0
Industrial Hydraulic	17.9	30.7	124.0	94.9	105.2	8.1
Other Hydraulic	13.6	18.9	120.4	101.3	106.0	10.3
Other Products	16.7	4.2	116.4	111.7	99.7	14.9
No. Cos. Reporting	-	-	74	78	76	-

U.S. FLUID POWER SHIPMENTS REPORT

Total Fluid Power	16.7	9.0	118.4	108.6	101.5	13.3
Pneumatic	9.1	6.0	109.3	103.1	100.1	7.2
Total Hydraulic	18.1	11.3	121.1	108.8	102.5	13.7
Mobile Hydraulic	19.6	13.4	123.5	108.9	103.2	14.6
Industrial Hydraulic	19.9	11.2	117.2	105.4	97.8	13.1
Other Hydraulic	9.1	1.9	114.7	112.5	105.1	9.9
Other Products	14.0	0.5	112.3	111.8	98.6	15.9
No. Cos. Reporting	-	-	74	78	76	-

Orders / Shipments index - Base year 2004 = 100. Data are not adjusted for seasonality or inflation.

*Percent change calculations in the following table is based on January 2006 preliminary data.

**Preliminary data subject to revision.

CSS Category Breakdown

Total Fluid Power	Pneumatic	Total Hydraulic	Mobile Hydraulic	Industrial Hydraulic	Other Hydraulic	Other Products
Pneumatic Total Hydraulic Other Products	Cylinders Valves FRLs Coalescing Filters Other Filters Other Products Replacement Parts	Mobile Hydraulic Industrial Hydraulic Other Hydraulic	Cylinders Valves Motors Piston Pumps Gear Pumps Vane Pumps	Cylinders Valves Motors Piston Pumps Gear Pumps Vane Pumps	Accumulators Filters Other Products Replacement Parts	Bulk Connectors Bulk Hose Assemblies Sealing Devices Manifolds

Fluid Power Suppliers, Power Units and all Electronics categories are independent categories and are not included in the above listed totals.

Copyright © 2006 National Fluid Power Association. All rights reserved. **Notice:** Published monthly for NFPA member companies' exclusive, confidential, internal use only. No one may make or distribute copies or reuse all or any part of this report without the written permission of NFPA. **Disclaimer:** This report is published by NFPA as a service to the fluid power industry and contains information provided by companies in the industry. NFPA does not recommend or endorse any particular use of this report. NFPA, its directors, members and employees are not responsible for errors or omissions in the report or for loss arising from its use and disclaim all warranties and guarantees, express or implied, with respect to the information in this report.

National Fluid Power Association, 3333 N. Mayfair Road, Milwaukee, WI 53222-3219 USA
Telephone: +1 414 778 3372 FAX: +1 414 778 3361 Internet: www.nfpa.com

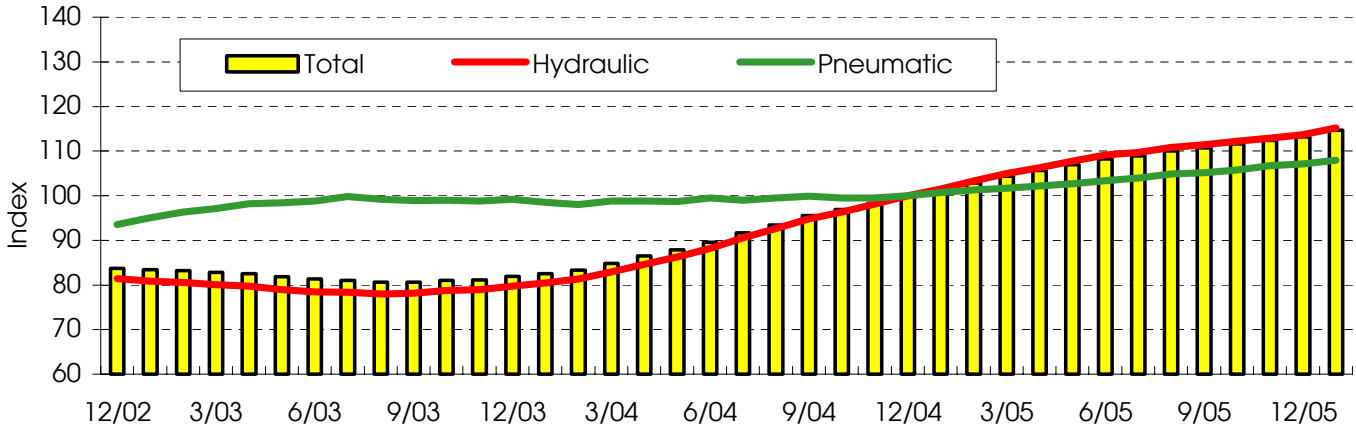
12 MMA AND 12/12 RATIO ANALYSIS

12 Month Moving Average - The average of the 12 most recent months of data. 12 MMA's make it possible to determine changes in the size of the market.

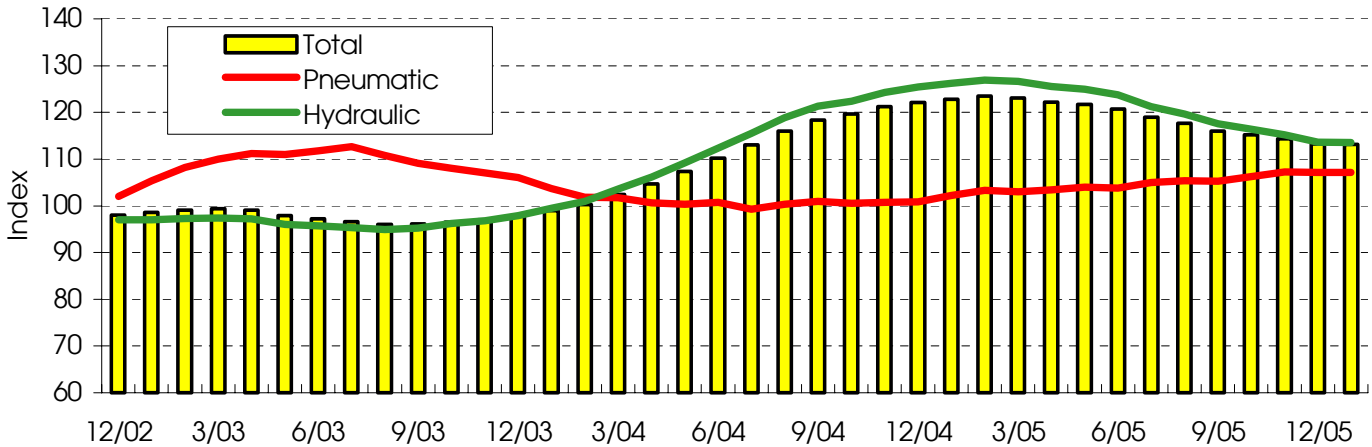
12/12 Ratio - A ratio of the current value of the 12 MMA to the value of the 12 MMA for the same time period a year ago. 12/12 Ratio's make it possible to determine changes in the rate of growth.

Total - Fluid Power, Hydraulic and Pneumatic

12 Month Moving Average - Shipments



12/12 Ratio - Shipments



Calculations in the following tables are based on final data from December.

Shipments	Jan 2006 Index *	Dec 2005 Index	Year to Date Index	Year to Date % Change	3 MMA	12 MMA	3/12	12/12
Total Fluid Power	118.4	108.6	113.3	13.3	110.7	113.3	110.0	113.3
Total Pneumatic	109.3	103.1	107.2	7.2	107.2	107.2	108.1	107.2
Total Hydraulic	121.1	108.8	113.7	13.7	110.4	113.7	108.8	113.7

Orders	Jan 2006 Index *	Dec 2005 Index	Year to Date Index	Year to Date % Change	3 MMA	12 MMA	3/12	12/12
Total Fluid Power	127.5	106.3	114.0	14.0	111.3	114.0	113.5	114.0
Total Pneumatic	113.9	104.6	106.0	6.0	107.2	106.0	110.5	106.0
Total Hydraulic	131.8	105.5	115.1	15.1	111.5	115.1	113.6	115.1

* Preliminary data

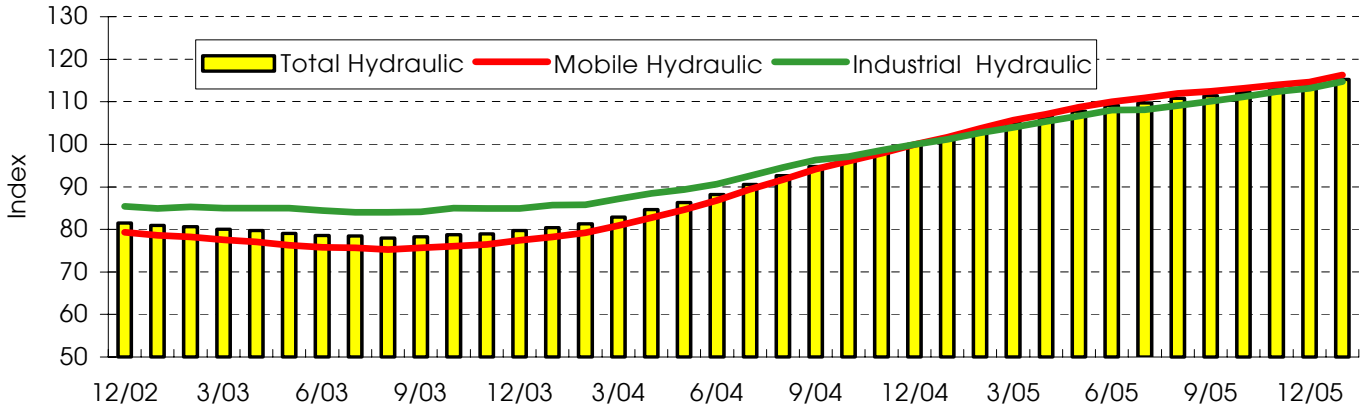
Yellow highlighted areas represent data displayed in the graphs above.

12 Month Moving Average - The average of the 12 most recent months of data. 12 MMA's make it possible to determine changes in the size of the market.

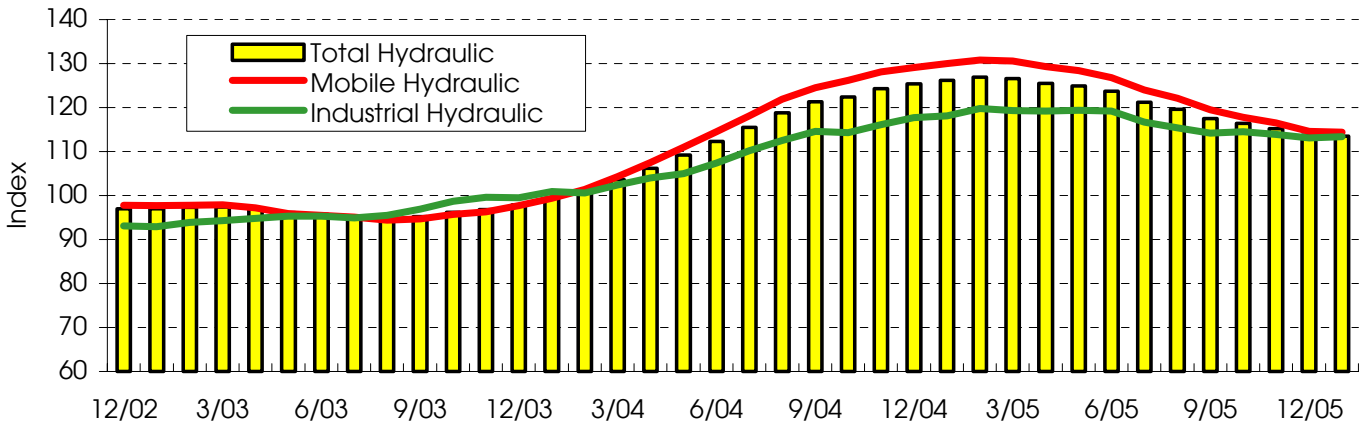
12/12 Ratio - A ratio of the current value of the 12 MMA to the value of the 12 MMA for the same time period a year ago. 12/12 Ratio's make it possible to determine changes in the rate of growth.

Total - Hydraulic, Mobile Hydraulic and Industrial Hydraulic

12 Month Moving Average - Shipments



12/12 Ratio - Shipments



Calculations in the following tables are based on final data from December.

Shipments	Jan 2006 Index *	Dec 2005 Index	Year to Date Index	Year to Date % Change	3 MMA	12 MMA	3/12	12/12
Total Hydraulic	121.1	108.8	113.7	13.7	110.4	113.7	108.8	113.7
Total Mobile Hydraulic	123.5	108.9	114.6	14.6	110.5	114.6	108.4	114.6
Total Industrial Hydraulic	117.2	105.4	113.1	13.1	112.2	113.1	112.2	113.1

Orders	Jan 2006 Index *	Dec 2005 Index	Year to Date Index	Year to Date % Change	3 MMA	12 MMA	3/12	12/12
Total Hydraulic	131.8	105.5	115.1	15.1	111.5	115.1	113.6	115.1
Total Mobile Hydraulic	136.1	109.1	118.0	18.0	114.0	118.0	115.5	118.0
Total Industrial Hydraulic	124.0	94.9	108.1	8.1	104.3	108.1	108.4	108.1

* Preliminary data

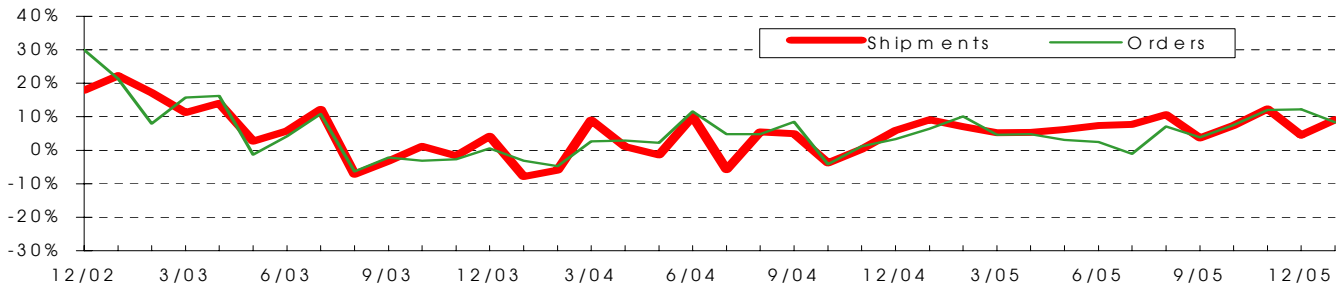
Yellow highlighted areas represent data displayed in the graphs above.

YEAR-TO-YEAR PERCENT CHANGE ANALYSIS

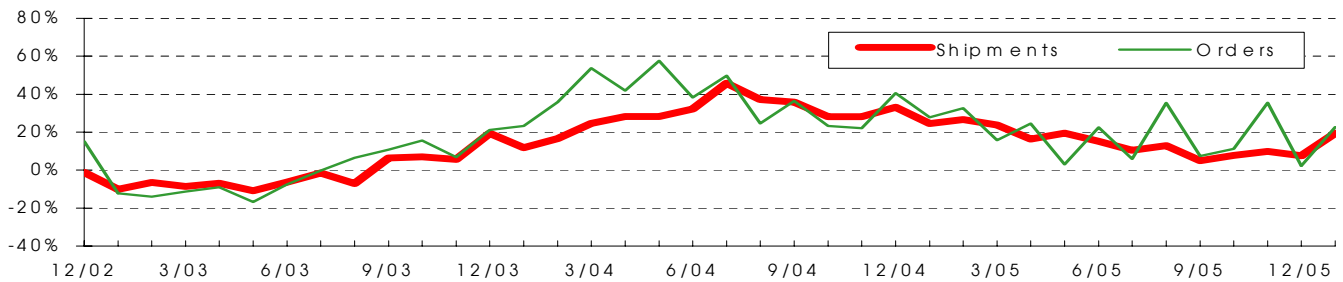
Year-to-Year Percent Change - A percentage change based on the ratio of the value for the current month to the value for the same month in the previous year.

Total - Pneumatic, Mobile Hydraulic and Industrial Hydraulic

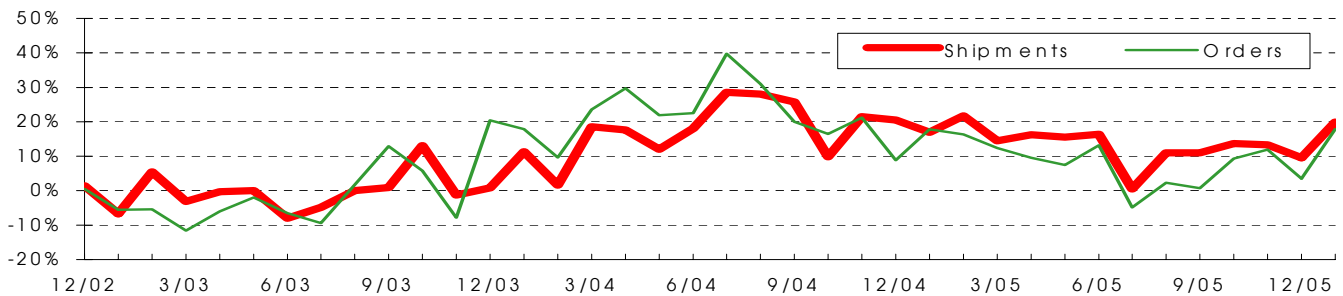
Pneumatic



Mobile Hydraulic



Industrial Hydraulic



Calculations in the following tables are based on final data from December.

	Jan 2006 Index *	Dec 2005 Index	% Change from a Year Ago	% Change from a Month Ago	Year to Date % Change	3 MMA	12 MMA	3/12	12/12
Shipments									
Total Pneumatic	109.3	103.1	4.5	-5.9	7.2	107.2	107.2	108.1	107.2
Total Mobile Hydraulic	123.5	108.9	7.6	-0.5	14.6	110.5	114.6	108.4	114.6
Total Industrial Hydraulic	117.2	105.4	9.6	-8.7	13.1	112.2	113.1	112.2	113.1

	Jan 2006 Index *	Dec 2005 Index	% Change from a Year Ago	% Change from a Month Ago	Year to Date % Change	3 MMA	12 MMA	3/12	12/12
Orders									
Total Pneumatic	113.9	104.6	12.2	-4.7	6.0	107.2	106.0	110.5	106.0
Total Mobile Hydraulic	136.1	109.1	2.3	-10.7	18.0	114.0	118.0	115.5	118.0
Total Industrial Hydraulic	124.0	94.9	3.5	-13.5	8.1	104.3	108.1	108.4	108.1

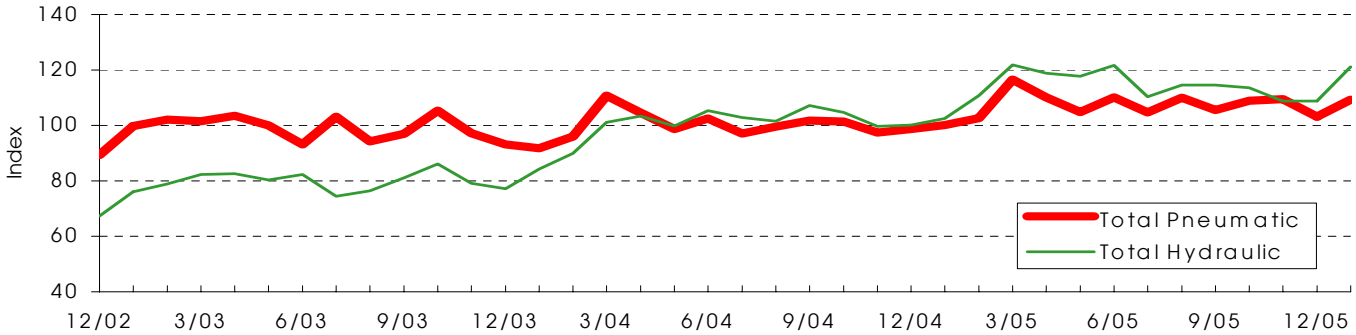
* Preliminary data

Yellow highlighted areas represent data displayed in the graphs above.

Raw Index Data - The index data generated by the total dollar volume reported to NFPA by CSS participants.

Total -Pneumatic and Hydraulic, Mobile and Industrial Hydraulic

Total Pneumatic and Hydraulic Shipments



Calculations in the following tables are based on final data from December.

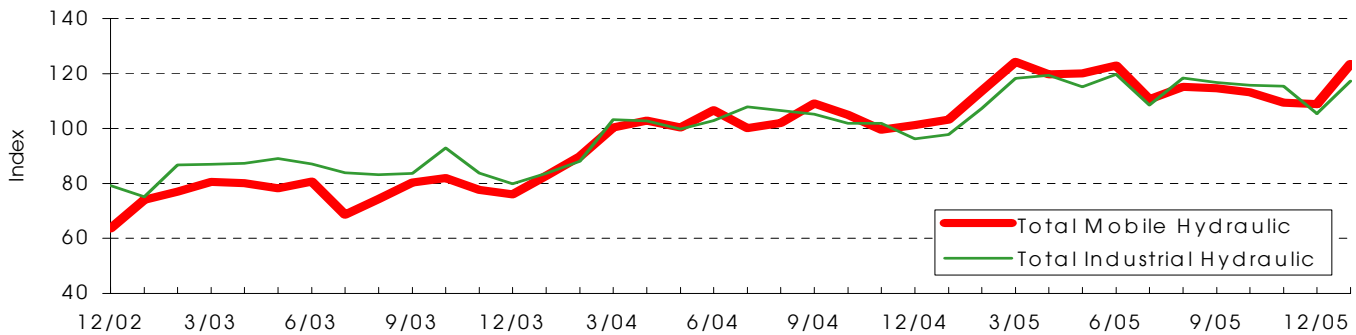
Shipments	Jan 2006 Index *	Dec 2005 Index	Year to Date Index	Year to Date % Change	3 MMA	12 MMA	3/12	12/12
Total Pneumatic	109.3	103.1	107.2	7.2	107.2	107.2	108.1	107.2
Total Hydraulic	121.1	108.8	113.7	13.7	110.4	113.7	108.8	113.7

Orders	Jan 2006 Index *	Dec 2005 Index	Year to Date Index	Year to Date % Change	3 MMA	12 MMA	3/12	12/12
Total Pneumatic	113.9	104.6	106.0	6.0	107.2	106.0	110.5	106.0
Total Hydraulic	131.8	105.5	115.1	15.1	111.5	115.1	113.6	115.1

* Preliminary data

Yellow highlighted areas represent data displayed in the graphs above.

Total Mobile and Industrial Hydraulic Shipments



Calculations in the following tables are based on final data from December.

Shipments	Jan 2006 Index *	Dec 2005 Index	Year to Date Index	Year to Date % Change	3 MMA	12 MMA	3/12	12/12
Total Mobile Hydraulic	123.5	108.9	114.6	14.6	110.5	114.6	108.4	114.6
Total Industrial Hydraulic	117.2	105.4	113.1	13.1	112.2	113.1	112.2	113.1

Orders	Jan 2006 Index *	Dec 2005 Index	Year to Date Index	Year to Date % Change	3 MMA	12 MMA	3/12	12/12
Total Mobile Hydraulic	136.1	109.1	118.0	18.0	114.0	118.0	115.5	118.0
Total Industrial Hydraulic	124.0	94.9	108.1	8.1	104.3	108.1	108.4	108.1

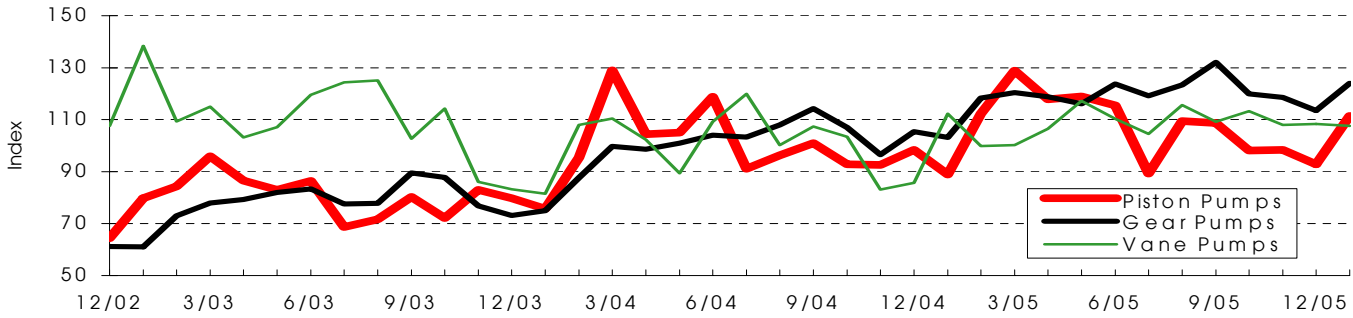
* Preliminary data

Yellow highlighted areas represent data displayed in the graphs above.

Raw Index Data - The index data generated by the total dollar volume reported to NFPA by CSS participants.

Hydraulic Pumps

Mobile Hydraulic Pumps Shipments



Calculations in the following tables are based on final data from December.

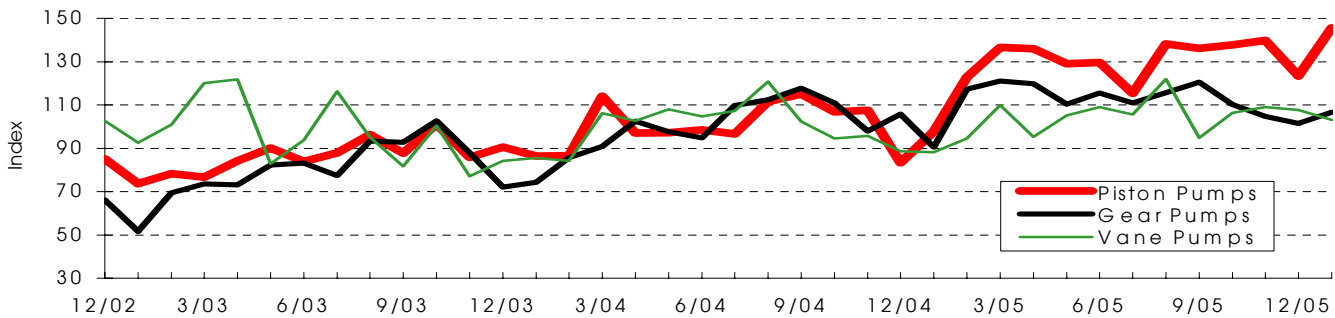
Shipments	Jan 2006 Index *	Dec 2005 Index	Year to Date Index	Year to Date % Change	3 MMA	12 MMA	3/12	12/12
MH Piston Pumps	111.4	92.8	106.6	6.6	96.4	106.6	102.0	106.6
MH Gear Pumps	123.9	113.5	118.9	18.9	117.3	118.9	113.9	118.9
MH Vane Pumps	107.6	108.3	108.7	8.7	109.8	108.7	121.1	108.7

Orders	Jan 2006 Index *	Dec 2005 Index	Year to Date Index	Year to Date % Change	3 MMA	12 MMA	3/12	12/12
MH Piston Pumps	139.4	90.9	116.7	16.7	95.7	116.7	103.4	116.7
MH Gear Pumps	120.7	113.4	119.9	19.9	117.4	119.9	117.2	119.9
MH Vane Pumps	102.4	85.4	107.4	7.4	102.3	107.4	109.3	107.4

* Preliminary data

Yellow highlighted areas represent data displayed in the graphs above.

Industrial Hydraulic Pumps Shipments



Calculations in the following tables are based on final data from December.

Shipments	Jan 2006 Index *	Dec 2005 Index	Year to Date Index	Year to Date % Change	3 MMA	12 MMA	3/12	12/12
IH Piston Pumps	145.5	123.4	128.5	28.5	133.7	128.5	134.8	128.5
IH Gear Pumps	106.6	101.4	111.5	11.5	105.4	111.5	100.6	111.5
IH Vane Pumps	103.0	107.7	103.9	3.9	107.7	103.9	115.9	103.9

Orders	Jan 2006 Index *	Dec 2005 Index	Year to Date Index	Year to Date % Change	3 MMA	12 MMA	3/12	12/12
IH Piston Pumps	126.1	87.1	106.2	6.2	105.1	106.2	120.2	106.2
IH Gear Pumps	121.2	96.4	107.0	7.0	101.8	107.0	100.7	107.0
IH Vane Pumps	124.7	83.0	104.0	4.0	95.0	104.0	110.5	104.0

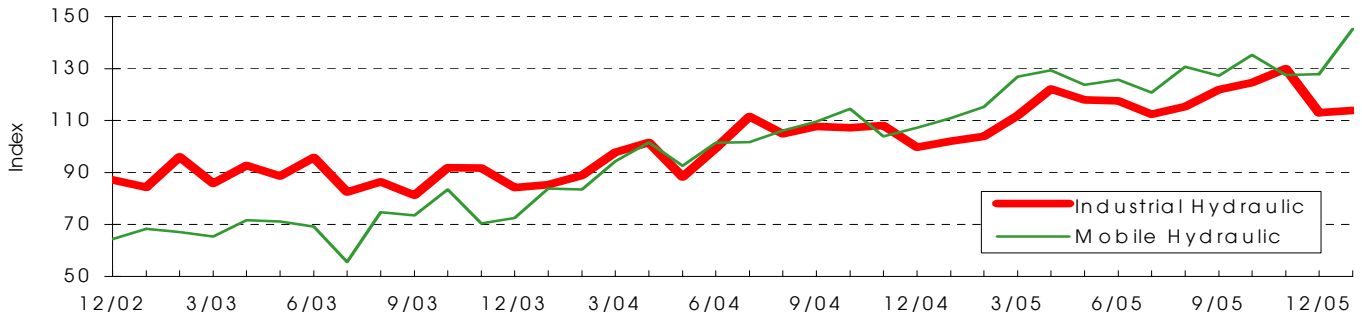
* Preliminary data

Yellow highlighted areas represent data displayed in the graphs above.

Raw Index Data - The index data generated by the total dollar volume reported to NFPA by CSS participants.

Hydraulic Cylinders and Valves

Hydraulic Cylinders Shipments



Calculations in the following tables are based on final data from December.

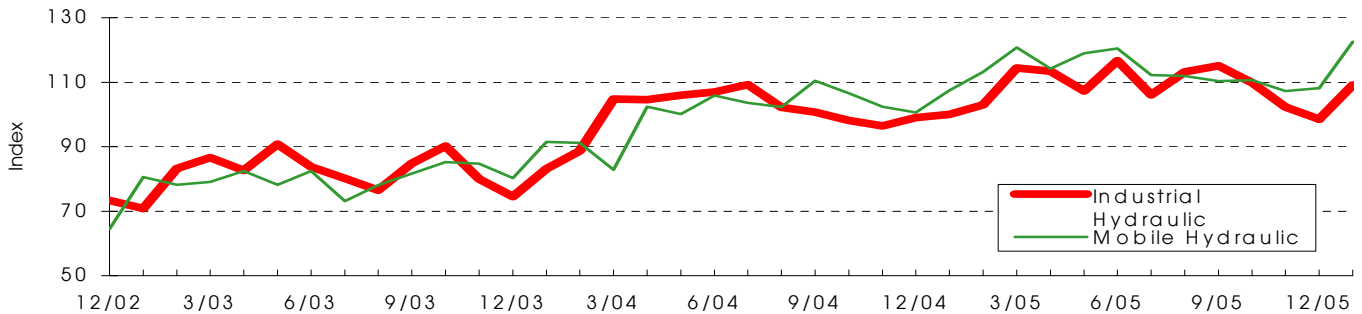
Shipments	Jan 2006 Index *	Dec 2005 Index	Year to Date Index	Year to Date % Change	3 MMA	12 MMA	3/12	12/12
MH Cylinders	145.2	127.9	125.1	25.1	130.2	125.1	120.0	125.1
IH Cylinders	113.8	113.0	116.0	16.0	122.5	116.0	116.7	116.0

Orders	Jan 2006 Index *	Dec 2005 Index	Year to Date Index	Year to Date % Change	3 MMA	12 MMA	3/12	12/12
MH Cylinders	149.2	133.0	126.1	26.1	137.9	126.1	133.3	126.1
IH Cylinders	117.5	107.7	113.3	13.3	114.6	113.3	111.9	113.3

* Preliminary data

Yellow highlighted areas represent data displayed in the graphs above.

Hydraulic Valves Shipments



Calculations in the following tables are based on final data from December.

Shipments	Jan 2006 Index *	Dec 2005 Index	Year to Date Index	Year to Date % Change	3 MMA	12 MMA	3/12	12/12
MH Valves	122.6	108.2	113.0	13.0	108.7	113.0	105.3	113.0
IH Valves	109.2	98.5	108.3	8.3	103.6	108.3	105.9	108.3

Orders	Jan 2006 Index *	Dec 2005 Index	Year to Date Index	Year to Date % Change	3 MMA	12 MMA	3/12	12/12
MH Valves	137.9	109.0	118.1	18.1	113.8	118.1	115.8	118.1
IH Valves	121.7	94.1	107.4	7.4	101.0	107.4	105.8	107.4

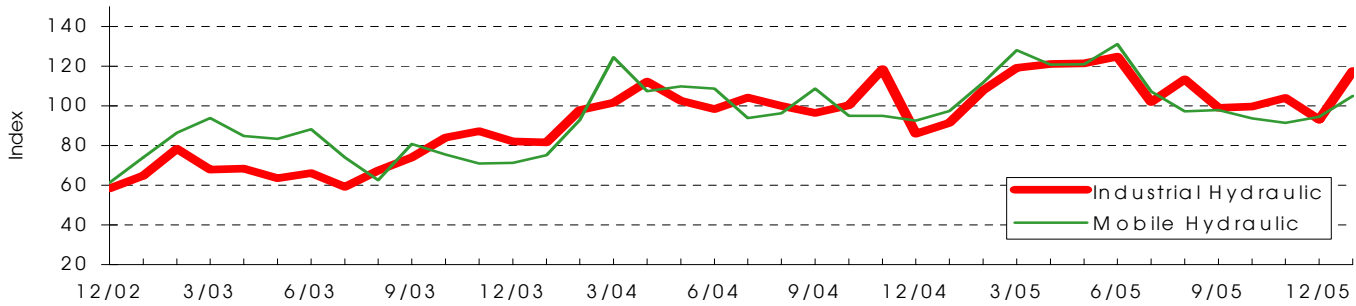
* Preliminary data

Yellow highlighted areas represent data displayed in the graphs above.

Raw Index Data – The index data generated by the total dollar volume reported to NFPA by CSS participants.

Hydraulic Motors, Filters and Pneumatic FRLs

Hydraulic Motors Shipments



Calculations in the following tables are based on final data from December.

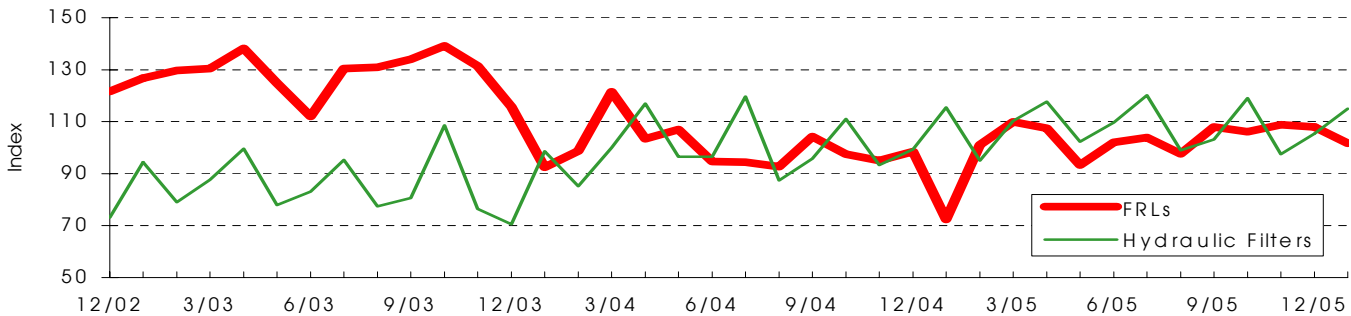
Shipments	Jan 2006 Index *	Dec 2005 Index	Year to Date Index	Year to Date % Change	3 MMA	12 MMA	3/12	12/12
MH Motors	105.0	94.5	107.7	7.7	93.2	107.7	99.0	107.7
IH Motors	117.6	93.1	108.1	8.1	98.9	108.1	97.3	108.1

Orders	Jan 2006 Index *	Dec 2005 Index	Year to Date Index	Year to Date % Change	3 MMA	12 MMA	3/12	12/12
MH Motors	120.0	87.0	104.9	4.9	90.9	104.9	93.2	104.9
IH Motors	136.8	91.9	106.3	6.3	100.4	106.3	92.4	106.3

* Preliminary data

Yellow highlighted areas represent data displayed in the graphs above.

Hydraulic Filters and Pneumatic FRLs Shipments



Calculations in the following tables are based on final data from December.

Shipments	Jan 2006 Index *	Dec 2005 Index	Year to Date Index	Year to Date % Change	3 MMA	12 MMA	3/12	12/12
Hydraulic Filters	115.0	105.4	107.9	7.9	107.3	107.9	106.0	107.9
Pneumatic FRLs	101.6	107.9	101.5	1.5	107.6	101.5	111.0	101.5

Orders	Jan 2006 Index *	Dec 2005 Index	Year to Date Index	Year to Date % Change	3 MMA	12 MMA	3/12	12/12
Hydraulic Filters	120.1	104.0	109.6	9.6	108.4	109.6	108.1	109.6
Pneumatic FRLs	99.2	107.0	102.8	2.8	108.6	102.8	112.2	102.8

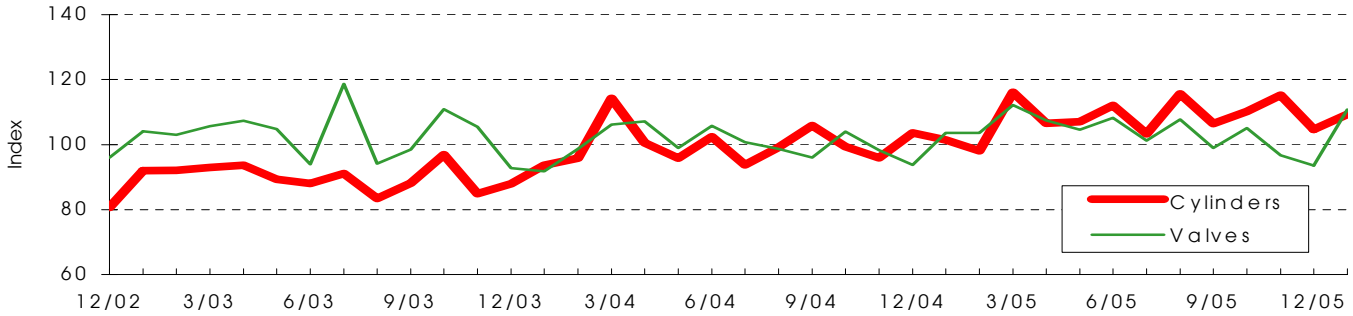
* Preliminary data

Yellow highlighted areas represent data displayed in the graphs above.

Raw Index Data - The index data generated by the total dollar volume reported to NFPA by CSS participants.

Pneumatic Cylinders, Valves and Filters

Pneumatic Cylinders and Valves Shipments



Calculations in the following tables are based on final data from December.

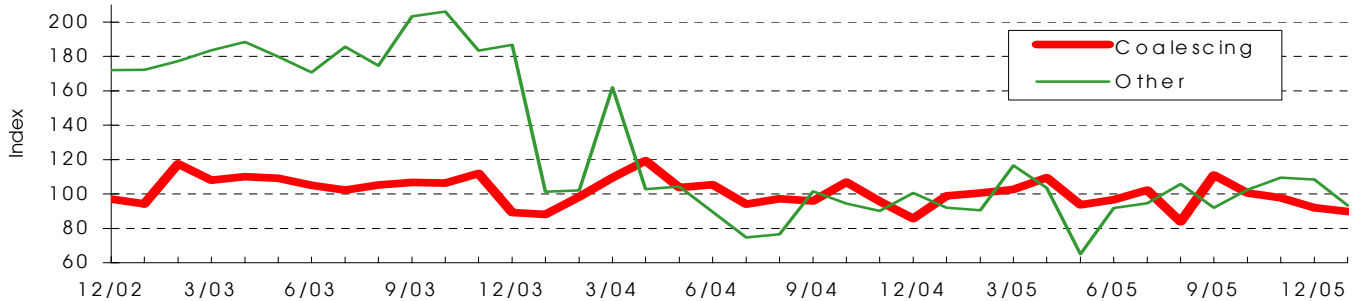
Shipments	Jan 2006 Index *	Dec 2005 Index	Year to Date Index	Year to Date % Change	3 MMA	12 MMA	3/12	12/12
Pneumatic Cylinders	109.3	104.7	108.1	8.1	110.1	108.1	110.5	108.1
Pneumatic Valves	110.8	93.6	103.6	3.6	98.5	103.6	99.8	103.6

Orders	Jan 2006 Index *	Dec 2005 Index	Year to Date Index	Year to Date % Change	3 MMA	12 MMA	3/12	12/12
Pneumatic Cylinders	109.3	112.1	106.5	6.5	110.2	106.5	112.4	106.5
Pneumatic Valves	133.2	93.0	102.5	2.5	100.0	102.5	106.8	102.5

* Preliminary data

Yellow highlighted areas represent data displayed in the graphs above.

Pneumatic Filters Shipments



Calculations in the following tables are based on final data from December.

Shipments	Jan 2006 Index *	Dec 2005 Index	Year to Date Index	Year to Date % Change	3 MMA	12 MMA	3/12	12/12
Coalescing Filters	89.7	92.0	99.1	-0.9	96.8	99.1	100.7	99.1
Other Filters	93.3	108.3	97.7	-2.3	106.7	97.7	112.3	97.7

Orders	Jan 2006 Index *	Dec 2005 Index	Year to Date Index	Year to Date % Change	3 MMA	12 MMA	3/12	12/12
Coalescing Filters	90.1	91.6	99.2	-0.8	97.0	99.2	100.8	99.2
Other Filters	98.1	105.0	102.1	2.1	109.8	102.1	115.9	102.1

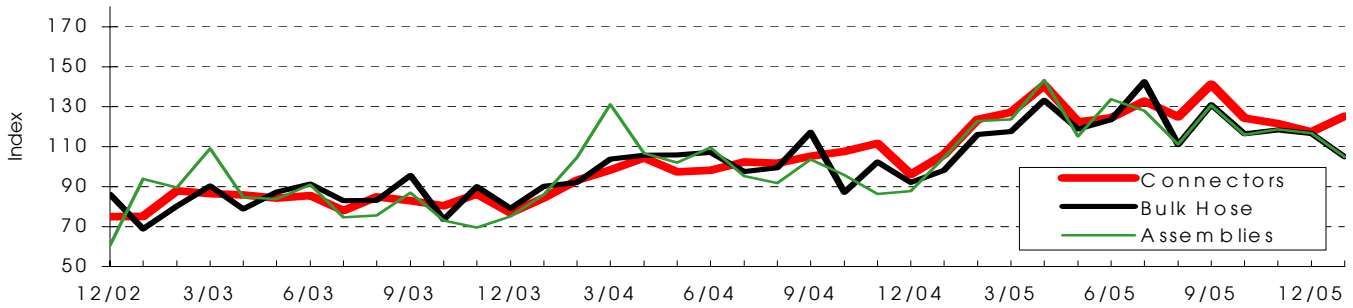
* Preliminary data

Yellow highlighted areas represent data displayed in the graphs above.

Raw Index Data - The index data generated by the total dollar volume reported to NFPA by CSS participants.

Fluid Power Connectors, Bulk Hose, Assemblies, Sealing Devices and Manifolds

Fluid Power Connectors, Bulk Hose and Assemblies Shipments



Calculations in the following tables are based on final data from December.

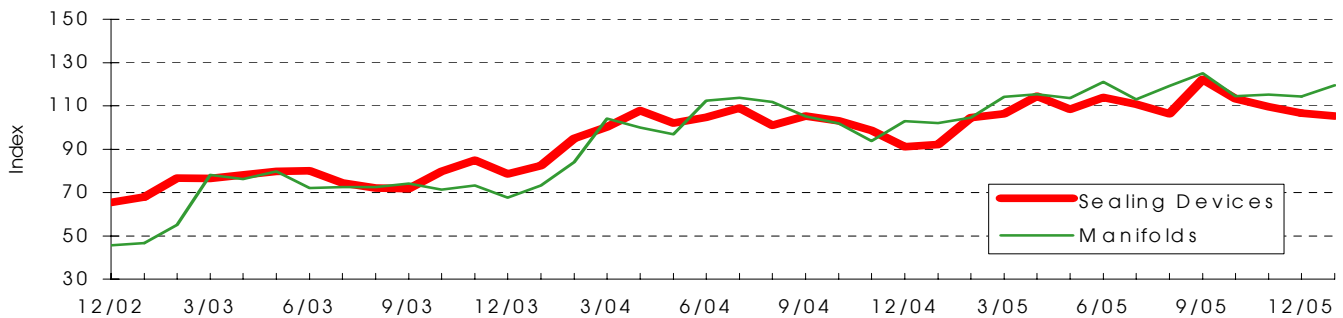
Shipments	Jan 2006 Index *	Dec 2005 Index	Year to Date Index	Year to Date % Change	3 MMA	12 MMA	3/12	12/12
Connectors	125.1	117.3	125.5	25.5	121.0	125.5	115.2	125.5
Bulk Hose	104.9	116.5	120.2	20.2	117.0	120.2	124.7	120.2
Assemblies	104.9	116.7	122.0	22.0	117.1	122.0	130.2	122.0

Orders	Jan 2006 Index *	Dec 2005 Index	Year to Date Index	Year to Date % Change	3 MMA	12 MMA	3/12	12/12
Connectors	127.3	116.6	125.5	25.5	120.5	125.5	114.6	125.5
Bulk Hose	104.8	116.5	120.0	20.0	116.8	120.0	124.6	120.0
Assemblies	104.9	116.7	120.4	20.4	117.1	120.4	130.4	120.4

* Preliminary data

Yellow highlighted areas represent data displayed in the graphs above.

Fluid Power Sealing Devices and Manifolds Shipments



Calculations in the following tables are based on final data from December.

Shipments	Jan 2006 Index *	Dec 2005 Index	Year to Date Index	Year to Date % Change	3 MMA	12 MMA	3/12	12/12
Sealing Devices	105.3	106.6	109.0	9.0	109.8	109.0	112.5	109.0
Manifolds	119.4	114.3	114.3	14.3	114.6	114.3	115.1	114.3

Orders	Jan 2006 Index *	Dec 2005 Index	Year to Date Index	Year to Date % Change	3 MMA	12 MMA	3/12	12/12
Sealing Devices	109.1	107.5	109.0	9.0	108.6	109.0	112.4	109.0
Manifolds	132.8	111.6	107.6	7.6	109.1	107.6	108.6	107.6

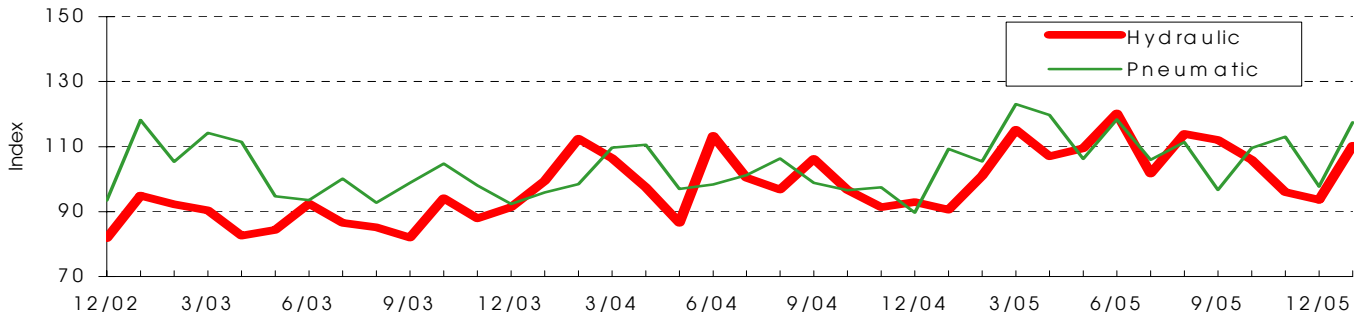
* Preliminary data

Yellow highlighted areas represent data displayed in the graphs above.

Raw Index Data - The index data generated by the total dollar volume reported to NFPA by CSS participants.

Replacement Parts, Accumulators and Power Units

Replacement Parts Shipments



Calculations in the following tables are based on final data from December.

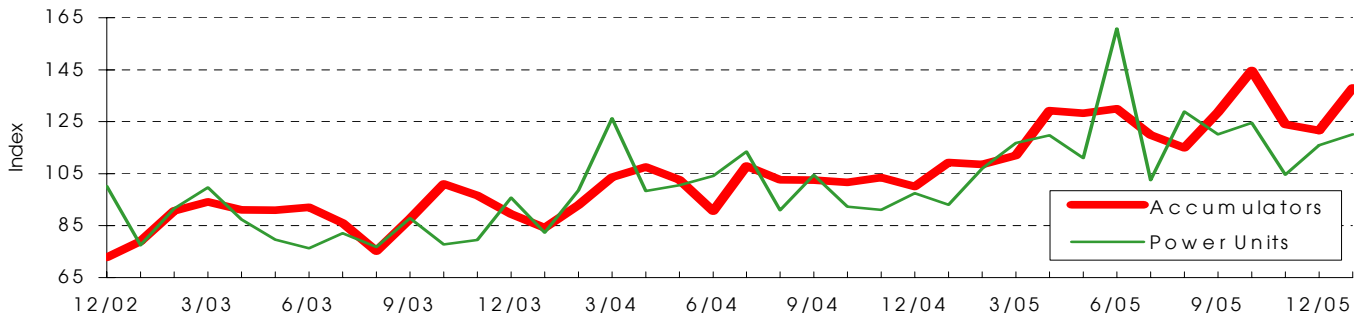
Shipments	Jan 2006 Index *	Dec 2005 Index	Year to Date Index	Year to Date % Change	3 MMA	12 MMA	3/12	12/12
Hyd. Replacement Parts	110.2	93.6	105.5	5.5	98.5	105.5	105.2	105.5
Pne. Replacement Parts	117.4	97.7	109.7	9.7	106.8	109.7	112.9	109.7

Orders	Jan 2006 Index *	Dec 2005 Index	Year to Date Index	Year to Date % Change	3 MMA	12 MMA	3/12	12/12
Hyd. Replacement Parts	118.3	90.8	106.9	6.9	102.4	106.9	110.8	106.9
Pne. Replacement Parts	121.4	96.6	108.8	8.8	107.9	108.8	118.0	108.8

* Preliminary data

Yellow highlighted areas represent data displayed in the graphs above.

Accumulators and Power Units Shipments



Calculations in the following tables are based on final data from December.

Shipments	Jan 2006 Index *	Dec 2005 Index	Year to Date Index	Year to Date % Change	3 MMA	12 MMA	3/12	12/12
Accumulators	138.0	121.6	122.6	22.6	130.1	122.6	127.9	122.6
Power Units	120.1	115.9	117.1	17.1	115.0	117.1	122.8	117.1

Orders	Jan 2006 Index *	Dec 2005 Index	Year to Date Index	Year to Date % Change	3 MMA	12 MMA	3/12	12/12
Accumulators	155.5	118.8	126.2	26.2	136.5	126.2	135.8	126.2
Power Units	141.3	106.4	113.6	13.6	102.9	113.6	105.6	113.6

* Preliminary data

Yellow highlighted areas represent data displayed in the graphs above.

PRODUCER PRICE INDEX DATA ANALYSIS

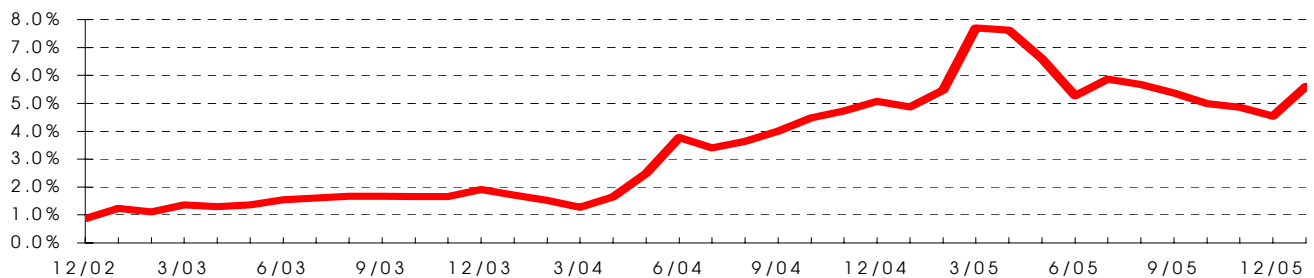
Producer Price Index Data - Indexes that measure the average change over time in the selling prices received by domestic producers of goods and services. PPI's measure price change from the perspective of the seller.

Producer Price Index

Products	Jan 2006	Dec 2005	Jan 2005	Products	Jan 2006	Dec 2005	Jan 2005
Machinery & Equipment	124.1	123.7	123.1	Fluid Power Valves & Connectors (cont.)			
Fluid Power Equipment	184.3	181.8	174.5	Pneumatic Valves, Non-Aerospace			
Air Compressors/Stationary	N/A	N/A	N/A	Directional	139.3	138.6	136.9
Air Compressors/Portable	N/A	N/A	N/A	Solenoid	144.9	143.5	141.7
Fluid Power Hand Tools	212.1	211.0	210.3	Other, Including Mechanical & Remote Pilot	111.4	111.9	110.3
				Connectors & Assemblies			
Fluid Power Pumps & Motors	138.3	136.0	132.7	Aerospace	211.6	N/A	202.7
Pumps, Non-Aerospace				Non-Aerospace			
Reciprocating	112.0	108.7	107.5	Flared Connectors for and Assemblies of Tubing	142.4	141.1	137.9
Rotary	111.4	110.7	107.1	Flareless Connectors for Hose Assemblies	138.8	137.3	131.4
Motors, Non-Aerospace	127.0	125.5	120.4	Hose Assemblies	107.3	105.4	105.4
Parts for Pumps & Motors	115.6	112.5	109.5	Valve Parts	146.3	141.0	141.5
Fluid Power Valves & Connectors	150.5	148.4	140.9	Fluid Power Cylinders & Actuators	156.5	153.9	147.5
Hydraulic Valves, Aerospace	N/A	N/A	N/A	Hydraulic, Non-Aerospace	142.9	141.0	135.3
Hydraulic Valves, Non-Aerospace				Pneumatic, Non-Aerospace	151.4	149.1	146.9
Directional	130.9	126.5	128.1	Aerospace	N/A	N/A	N/A
Manual	138.4	131.2	134.8	Parts	155.8	155.8	147.5
Other, Including Solenoid	118.5	118.0	116.8				
Other	123.9	120.0	118.2				
Cartridge	129.4	118.7	114.8				
Other, Including Electrohydraulic	121.6	120.5	119.7				

Producer Price Index data is provided by the U.S. Department of Labor, Bureau of Labor Statistics

Producer Price Index for "Fluid Power Equipment"



Data in this graph are year-to-year percent changes of monthly indexes.

CSS U.S. SHIPMENTS DETAIL FOR DECEMBER 2005/JANUARY 2006

Product Type/Index	Jan 2006 Index*	Dec 2005 Index	Year to Date Index	Year to Date % Change	3 MMA	12 MMA	3/12	12/12
Pneumatic Cylinders	109.3	104.7	108.1	8.1	110.1	108.1	110.5	108.1
Industrial Hydraulic Cylinders	113.8	113.0	116.0	16.0	122.5	116.0	116.7	116.0
Mobile Hydraulic Cylinders	145.2	127.9	125.1	25.1	130.2	125.1	120.0	125.1
Total Cylinders	131.7	119.8	119.2	19.2	124.0	119.2	117.0	119.2
Pneumatic Valves	110.8	93.6	103.6	3.6	98.5	103.6	99.8	103.6
Industrial Hydraulic Valves	109.2	98.5	108.3	8.3	103.6	108.3	105.9	108.3
Mobile Hydraulic Valves	122.6	108.2	113.0	13.0	108.7	113.0	105.3	113.0
Total Valves	118.9	104.7	111.0	11.0	106.6	111.0	104.8	111.0
Industrial Hydraulic Motors	117.6	93.1	108.1	8.1	98.9	108.1	97.3	108.1
Mobile Hydraulic Motors	105.0	94.5	107.7	7.7	93.2	107.7	99.0	107.7
Total Motors	107.5	94.2	107.8	7.8	94.4	107.8	99.7	107.8
Ind. Hyd. Piston Pumps	145.5	123.4	128.5	28.5	133.7	128.5	134.8	128.5
Ind. Hyd. Gear Pumps	106.6	101.4	111.5	11.5	105.4	111.5	100.6	111.5
Ind. Hyd. Vane Pumps	103.0	107.7	103.9	3.9	107.7	103.9	115.9	103.9
Industrial Hydraulic Pumps	131.8	116.7	120.8	20.8	123.9	120.8	126.7	120.8
Mob. Hyd. Piston Pumps	111.4	92.8	106.6	6.6	96.4	106.6	102.0	106.6
Mob. Hyd. Gear Pumps	123.9	113.5	118.9	18.9	117.3	118.9	113.9	118.9
Mob. Hyd. Vane Pumps	107.6	108.3	108.7	8.7	109.8	108.7	121.1	108.7
Mobile Hydraulic Pumps	116.3	101.6	111.6	11.6	105.2	111.6	106.8	111.6
Total Pumps	119.3	104.6	113.4	13.4	108.9	113.4	110.8	113.4
Accumulators	138.0	121.6	122.6	22.6	130.1	122.6	127.9	122.6
Hydraulic Filters	115.0	105.4	107.9	7.9	107.3	107.9	106.0	107.9
Hydraulic Other Products	109.4	163.6	117.3	17.3	117.9	117.3	113.9	117.3
Hydraulic Replacement Parts	110.2	93.6	105.5	5.5	98.5	105.5	105.2	105.5
FRLs	101.6	107.9	101.5	1.5	107.6	101.5	111.0	101.5
Pneumatic Filters, Coalescing	89.7	92.0	99.1	-0.9	96.8	99.1	100.7	99.1
Pneumatic Filters, Other	93.3	108.3	97.7	-2.3	106.7	97.7	112.3	97.7
Pneumatic Other Products	119.5	122.8	127.4	27.4	122.2	127.4	120.5	127.4
Pneumatic Replacement Parts	117.4	97.7	109.7	9.7	106.8	109.7	112.9	109.7
Connectors	125.1	117.3	125.5	25.5	121.0	125.5	115.2	125.5
Bulk Hose	104.9	116.5	120.2	20.2	117.0	120.2	124.7	120.2
Assemblies	104.9	116.7	122.0	22.0	117.1	122.0	130.2	122.0
Sealing Devices	105.3	106.6	109.0	9.0	109.8	109.0	112.5	109.0
Manifolds	119.4	114.3	114.3	14.3	114.6	114.3	115.1	114.3
Total Fluid Power	118.4	108.6	113.3	13.3	110.7	113.3	110.0	113.3
Total Pneumatic	109.3	103.1	107.2	7.2	107.2	107.2	108.1	107.2
Total Hydraulic	121.1	108.8	113.7	13.7	110.4	113.7	108.8	113.7
Total Mobile Hydraulic	123.5	108.9	114.6	14.6	110.5	114.6	108.4	114.6
Total Industrial Hydraulic	117.2	105.4	113.1	13.1	112.2	113.1	112.2	113.1
Total Other Hydraulic	114.7	112.5	109.9	9.9	108.0	109.9	106.8	109.9
Other Products	112.3	111.8	115.9	15.9	114.4	115.9	116.1	115.9
Suppliers Products	122.7	109.1	117.6	17.6	113.9	117.6	97.4	117.6
Power Units	120.1	115.9	117.1	17.1	115.0	117.1	122.8	117.1

* Preliminary data subject to revision.
Calculations in the following table are based on final data from December.
Base Year 2004 = 100 for all indexes.

CSS U.S. ORDERS DETAIL FOR DECEMBER 2005/JANUARY 2006

Product Type/Index	Jan 2006 Index*	Dec 2005 Index	Year to Date Index	Year to Date % Change	3 MMA	12 MMA	3/12	12/12
Pneumatic Cylinders	109.3	112.1	106.5	6.5	110.2	106.5	112.4	106.5
Industrial Hydraulic Cylinders	117.5	107.7	113.3	13.3	114.6	113.3	111.9	113.3
Mobile Hydraulic Cylinders	149.2	133.0	126.1	26.1	137.9	126.1	133.3	126.1
Total Cylinders	135.4	124.5	119.3	19.3	128.0	119.3	125.5	119.3
Pneumatic Valves	133.2	93.0	102.5	2.5	100.0	102.5	106.8	102.5
Industrial Hydraulic Valves	121.7	94.1	107.4	7.4	101.0	107.4	105.8	107.4
Mobile Hydraulic Valves	137.9	109.0	118.1	18.1	113.8	118.1	115.8	118.1
Total Valves	134.3	104.2	114.2	14.2	109.7	114.2	112.7	114.2
Industrial Hydraulic Motors	136.8	91.9	106.3	6.3	100.4	106.3	92.4	106.3
Mobile Hydraulic Motors	120.0	87.0	104.9	4.9	90.9	104.9	93.2	104.9
Total Motors	123.3	88.0	105.2	5.2	92.8	105.2	94.6	105.2
Ind. Hyd. Piston Pumps	126.1	87.1	106.2	6.2	105.1	106.2	120.2	106.2
Ind. Hyd. Gear Pumps	121.2	96.4	107.0	7.0	101.8	107.0	100.7	107.0
Ind. Hyd. Vane Pumps	124.7	83.0	104.0	4.0	95.0	104.0	110.5	104.0
Industrial Hydraulic Pumps	125.1	87.7	105.9	5.9	102.8	105.9	114.9	105.9
Mob. Hyd. Piston Pumps	139.4	90.9	116.7	16.7	95.7	116.7	103.4	116.7
Mob. Hyd. Gear Pumps	120.7	113.4	119.9	19.9	117.4	119.9	117.2	119.9
Mob. Hyd. Vane Pumps	102.4	85.4	107.4	7.4	102.3	107.4	109.3	107.4
Mobile Hydraulic Pumps	130.9	99.9	117.8	17.8	104.6	117.8	109.2	117.8
Total Pumps	129.7	97.3	115.3	15.3	104.2	115.3	110.0	115.3
Accumulators	155.5	118.8	126.2	26.2	136.5	126.2	135.8	126.2
Hydraulic Filters	120.1	104.0	109.6	9.6	108.4	109.6	108.1	109.6
Hydraulic Other Products	106.8	104.2	110.6	10.6	107.1	110.6	122.4	110.6
Hydraulic Replacement Parts	118.3	90.8	106.9	6.9	102.4	106.9	110.8	106.9
FRLs	99.2	107.0	102.8	2.8	108.6	102.8	112.2	102.8
Pneumatic Filters, Coalescing	90.1	91.6	99.2	-0.8	97.0	99.2	100.8	99.2
Pneumatic Filters, Other	98.1	105.0	102.1	2.1	109.8	102.1	115.9	102.1
Pneumatic Other Products	105.7	107.6	123.6	23.6	113.1	123.6	112.6	123.6
Pneumatic Replacement Parts	121.4	96.6	108.8	8.8	107.9	108.8	118.0	108.8
Connectors	127.3	116.6	125.5	25.5	120.5	125.5	114.6	125.5
Bulk Hose	104.8	116.5	120.0	20.0	116.8	120.0	124.6	120.0
Assemblies	104.9	116.7	120.4	20.4	117.1	120.4	130.4	120.4
Sealing Devices	109.1	107.5	109.0	9.0	108.6	109.0	112.4	109.0
Manifolds	132.8	111.6	107.6	7.6	109.1	107.6	108.6	107.6
Total Fluid Power	127.5	106.3	114.0	14.0	111.3	114.0	113.5	114.0
Total Pneumatic	113.9	104.6	106.0	6.0	107.2	106.0	110.5	106.0
Total Hydraulic	131.8	105.5	115.1	15.1	111.5	115.1	113.6	115.1
Total Mobile Hydraulic	136.1	109.1	118.0	18.0	114.0	118.0	115.5	118.0
Total Industrial Hydraulic	124.0	94.9	108.1	8.1	104.3	108.1	108.4	108.1
Total Other Hydraulic	120.4	101.3	110.3	10.3	108.4	110.3	112.1	110.3
Other Products	116.4	111.7	114.9	14.9	113.1	114.9	115.1	114.9
Suppliers Products	128.2	124.3	108.6	8.6	120.0	108.6	132.5	108.6
Power Units	141.3	106.4	113.6	13.6	102.9	113.6	105.6	113.6

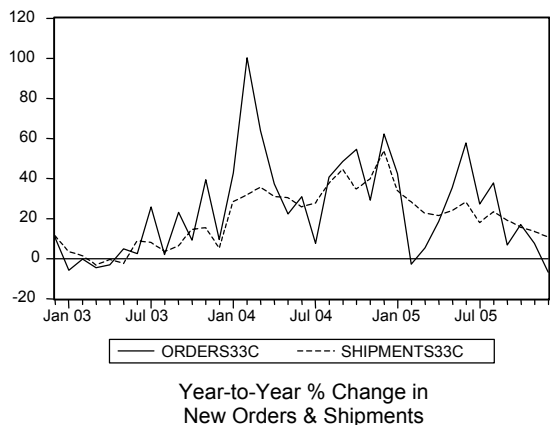
* Preliminary data subject to revision.
 Calculations in the following table are based on final data from December.
 Base Year 2004 = 100 for all indexes.



CSS End Use Markets Supplement: January 2006

Data for December 2005

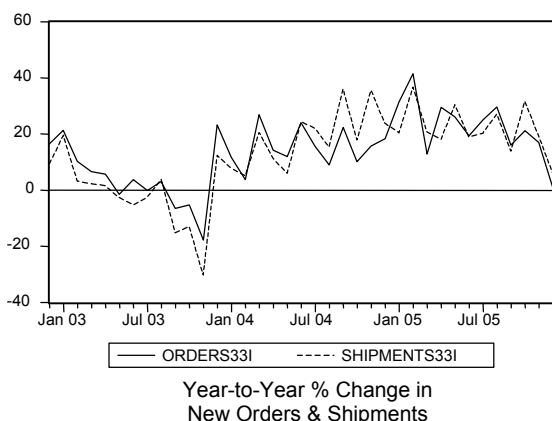
Construction Machinery Manufacturing (NAICS 33C)



	% Change from one year ago	% Change from one month ago	Current Month	Previous Month (revised)	Same Month one year ago
Orders	-6.7%	-6.6%	2,768	2,963	2,966
Shipments	10.8%	2.7%	2,988	2,909	2,697

- Orders have been volatile month to month since the middle of last year.
- This month's report partially breaks the pattern with a second consecutive decline.
- Over the last two months orders have seen a cumulative decline of 14%.
- Shipments have been less volatile, and have retained a fairly consistent upward drift.

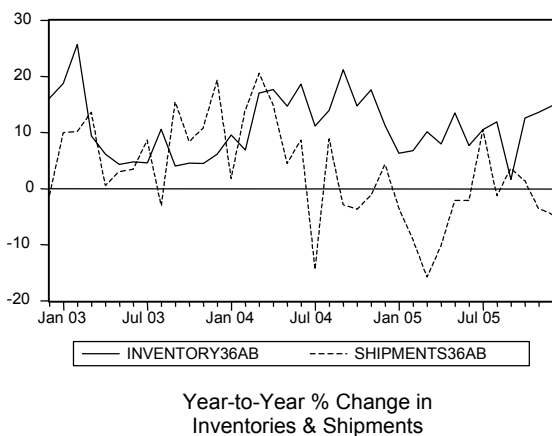
Metal Working Machinery Manufacturing (NAICS 33I)



	% Change from one year ago	% Change from one month ago	Current Month	Previous Month (revised)	Same Month one year ago
Orders	1.2%	15.5%	3,264	2,826	3,225
Shipments	6.2%	13.2%	3,223	2,846	3,036

- Both orders and shipments surged upward.
- Orders are back near the peak this time last year, shipments have moved well above last year's peak.
- Such surges around the turn of the year have been common in these data series over the last few years.

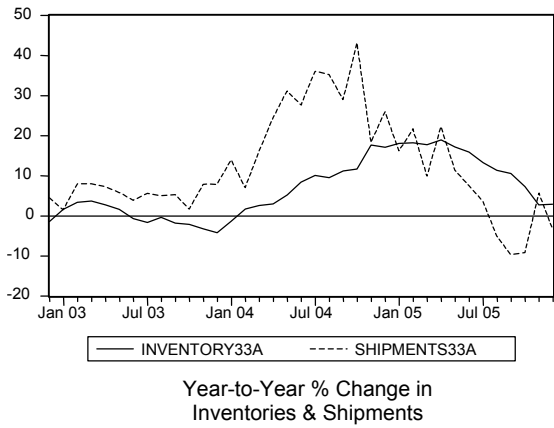
Auto, Light Truck & Utility Vehicle Manufacturing (NAICS 36A,B)



	% Change from one year ago	% Change from one month ago	Current Month	Previous Month (revised)	Same Month one year ago
Inventories	14.8%	-1.8%	5,529	5,630	4,816
Shipments	-4.7%	7.4%	21,513	20,036	22,565

- The recent pattern in these data was reversed this month; it was shipments that rose and inventories that fell.
- The inventory decline was concentrated in autos by a three-to-one margin.
- In contrast, the shipment gains were concentrated in LTUV, again by roughly a three-to-one margin.

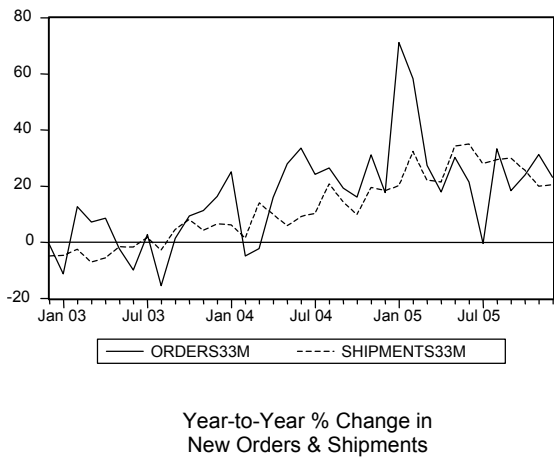
Farm Machinery & Equipment Manufacturing (NAICS 33A)



	% Change from one year ago	% Change from one month ago	Current Month	Previous Month (revised)	Same Month one year ago
Inventories	2.9%	-2.4%	2,367	2,425	2,301
Shipments	-3.2%	-2.0%	1,700	1,734	1,757

- Inventories resumed the trend downward that began at mid-year of 2005.
- The slippage in shipments merely gives back some of the substantial gains of the previous two months.
- Shipment volume is on par with average values for the second half of 2004 and early 2005.

Material Handling Equipment Manufacturing (NAICS 33M)

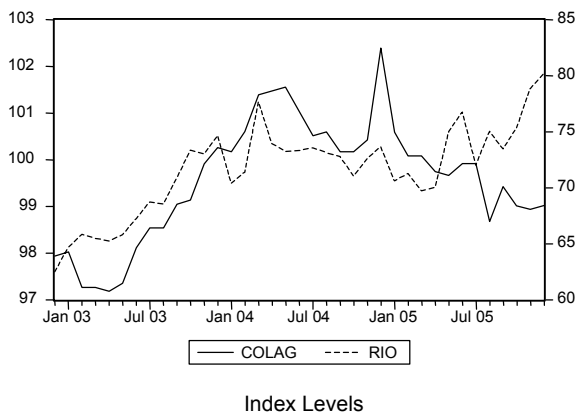


	% Change from one year ago	% Change from one month ago	Current Month	Previous Month (revised)	Same Month one year ago
Orders	23.1%	-10.6%	2,086	2,334	1,694
Shipments	20.5%	1.8%	1,948	1,914	1,617

- The U.S. Census Bureau's orders data are highly suspect at this point.
- A nearly 17% decline initially reported last month has been revised into a 17% increase!
- December's newly reported decline still leaves orders above October's value.
- Shipments have fluctuated modestly in recent months, but have shown no clear directional movement.

Leading Indicators: COLAG & RIO

COLAG is the ratio of the Coincident to Lagging Indicators for the U.S., as reported by the Conference Board. (Index, 1996=100)
RIO is the Ratio of New Orders to Inventories for the Durable Manufacturing Sector.



	% Change from one year ago	% Change from one month ago	Current Month	Previous Month (revised)	Same Month one year ago
COLAG	-3.3%	0.1%	99.0	98.9	102.4
RIO	8.8%	1.7%	80.2	78.9	73.7

- The minimal gain in COLAG does nothing to reverse what has been an extended downward movement.
- RIO added another nice gain, thereby reinforcing an extended stretch of upward movement.
- RIO's gains have come mostly from rising orders; inventory movement has been much more modest.